

**Head Office:**  
Dixon Kelley Estate Agents  
1 Penn Court  
Station Road, West Moors  
Dorset. BH22 0JJ

# DORSET PARK HOMES

**DRAFT**

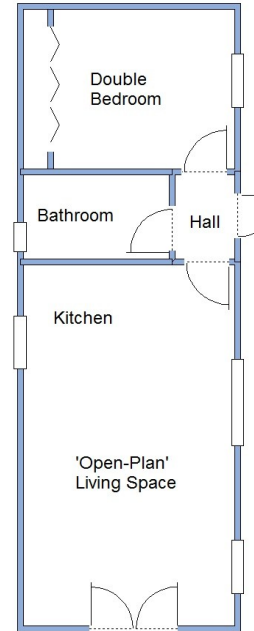
[www.dorsetparkhomes.com](http://www.dorsetparkhomes.com)

**Telephone: 01202 877511**

**130 East Drive, Oaktree Park, St Leonards, Ringwood. BH24 2RS**



**Quality New Home—Ready for Early Occupation!**



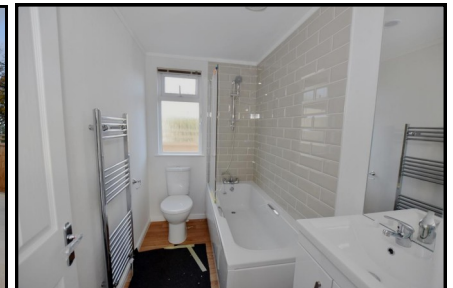
This drawing has been prepared for diagrammatic purpose only. Not to scale.

## 1-Bedroom Park Home - approx 36' x 13'

**Accommodation & approximate room dimensions:**

- Prestige Homeseeker 'Accolade'
- 'Open-Plan' Living Space: approx 20'4" x 12'  
Double doors with 'Juliet' style balcony. Vaulted ceiling with LED spot lights
- Kitchen/Diner: Range of floor & wall cupboards. Built-in oven, hob & cooker hood. Integrated washing machine & fridge/freezer. Cupboard housing central heating boiler.
- Bedroom: approx 10' x 9' Plus large wardrobes
- Bathroom: Panelled bath with shower over & screen fitted. Vanity basin & WC. Chrome towel rail.
- Gas Central Heating (system untested)
- PVCu Double-Glazing
- Stylish Interior & Fully Furnished
- 10 Year Gold Shield Warranty
- Delightful Garden with Metal Shed
- Allocated Parking for 1 car.
- Age Restriction 50+ Pets Considered
- On-site Members Club
- Well maintained Residential Park between Ringwood & Ferndown & adjacent to forest.

## Charming New Home



**Pitch Fee: approx £197.55 per month**

**Subject to Annual Review**

**Council Tax Band: 'A' Tenure: 1983 Mobile Homes Act Agreement**

**Price: £165,000**

**VIEWING STRICTLY BY APPOINTMENT WITH THE VENDOR'S AGENT Dorset Park Homes 01202 877511**

**IMPORTANT NOTE:** These particulars are believed to be correct but their accuracy is not guaranteed. They do not form part of any contract. Nothing in these particulars shall be deemed to be a statement that the property is in good structural condition or otherwise, nor that any of the services, appliances, equipment or facilities are in good working order or have been tested. Purchasers should satisfy themselves on such matters prior to purchase Ref:W04205

*The recommended specialist in Park Home sales*

Partner: Simon Dixon

